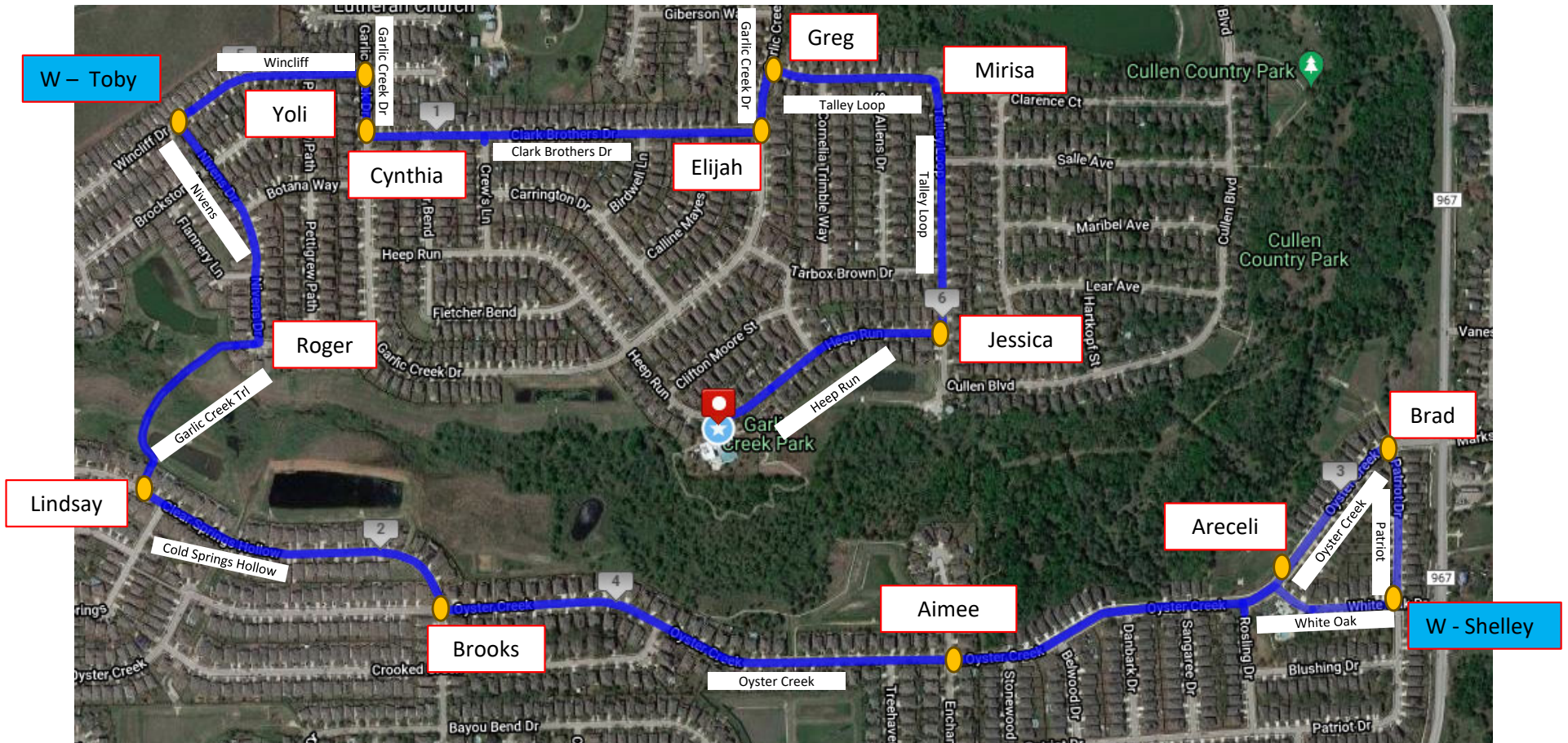


Garlic Creek 5K/10K – Out and Back, First/Last is same as 5K



Participants will start on Heep, Left on Talley Loop, Left on Garlic Creek, Right on Clark Bros, Right on Garlic Creek, Left on Wincliff, Left on Nivens (5K turns around here), 10K take Trail to Clear Spring Hollow, Left on Clear Spring Hollow, Left on Oyster Creek, Right on Patriot, Right on White Oak, Left on Oyster and go back, following same route to GC House.

Three water stations (marked with W), Volunteers along course (V), arrows and upright signs will mark course and alert drivers to participants on the roads.

Parking will be along Garlic Creek Drive, west of Heep/Garlic Creek. Restrooms located inside GC House/Pool Area. Trash will be collected in bins onsite.